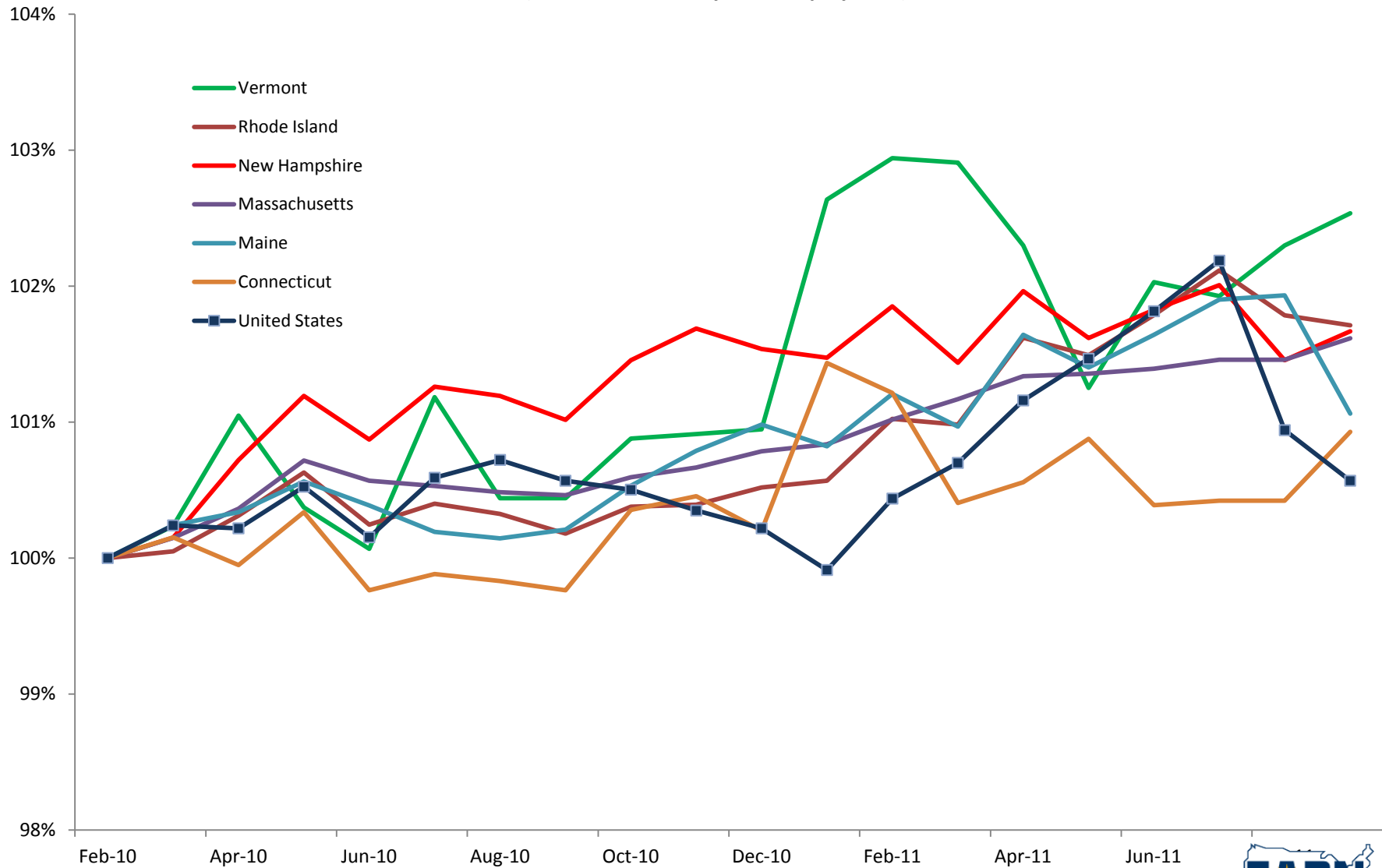


New England employment rebounding: February 2010-September 2011

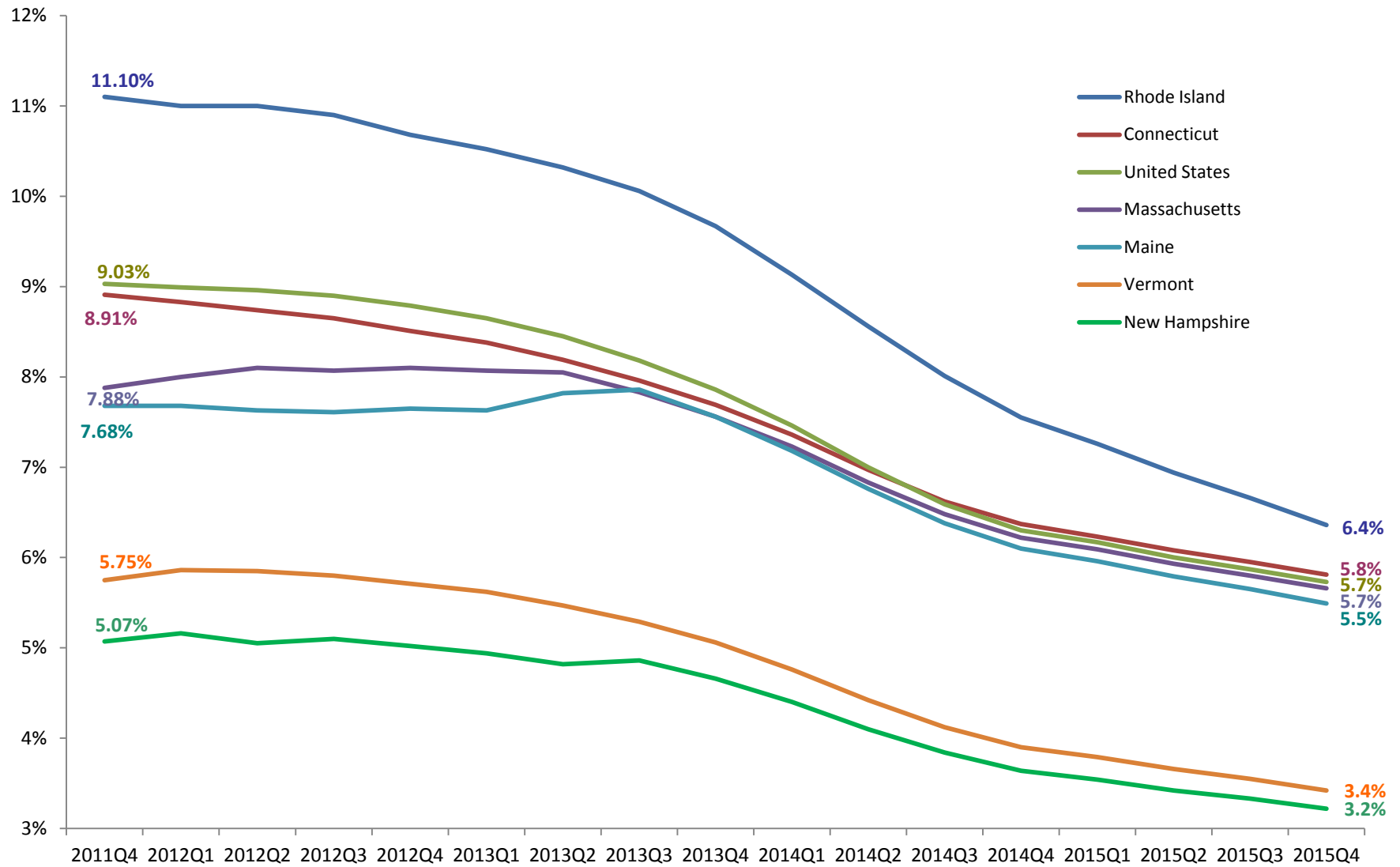
(indexed to February 2010 employment)



Source: Economic Policy Institute analysis of Bureau of Labor Statistics data.



New England state unemployment rates: Forecast, 2011-2015

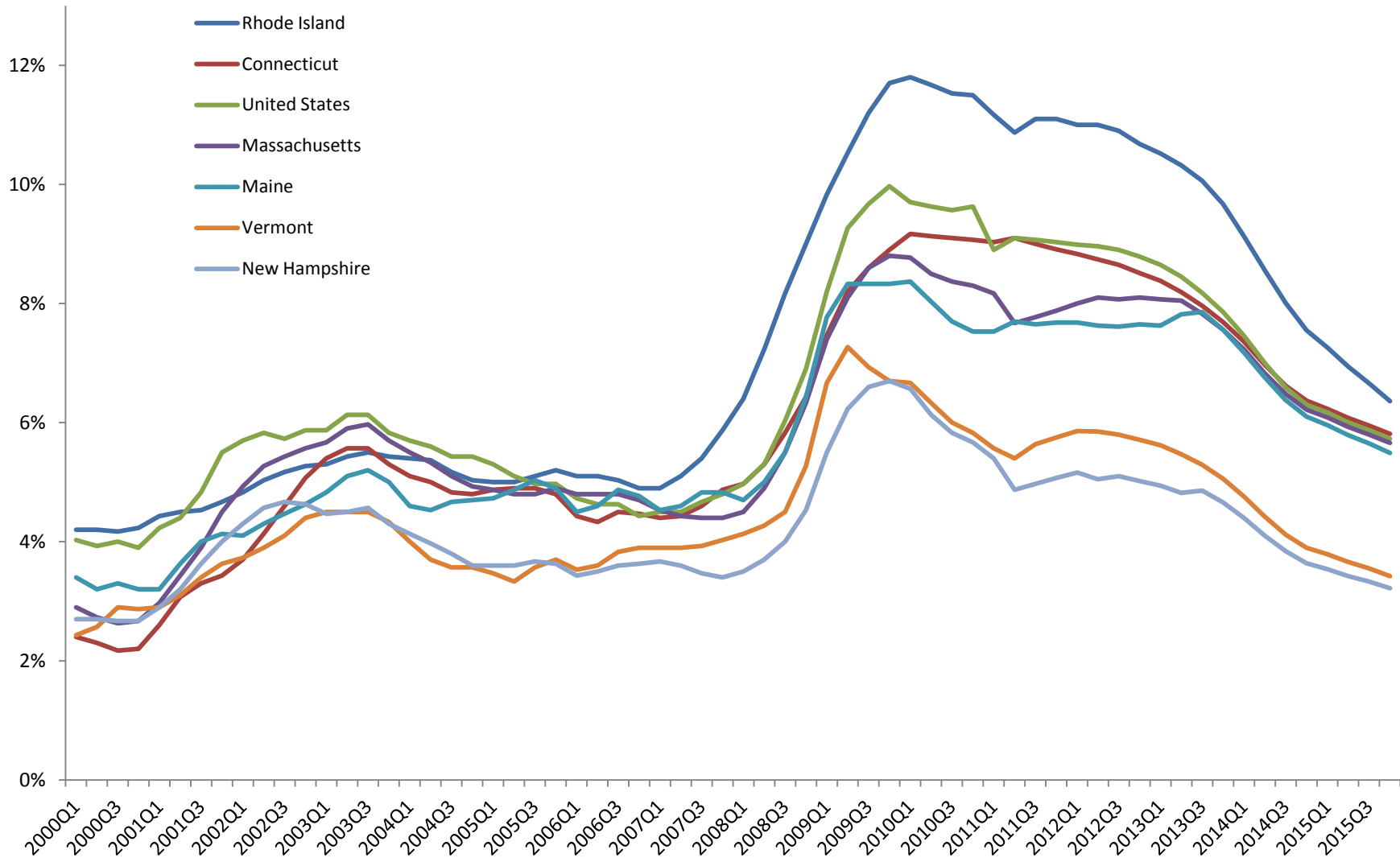


Source: Economic Policy Institute analysis of October 2011 Moody's Analytics data.



New England state unemployment rates: 2000-2015

(Actual and Forecast)



Source. Economic Policy Institute analysis of October 2011 Moody's Analytics data.

