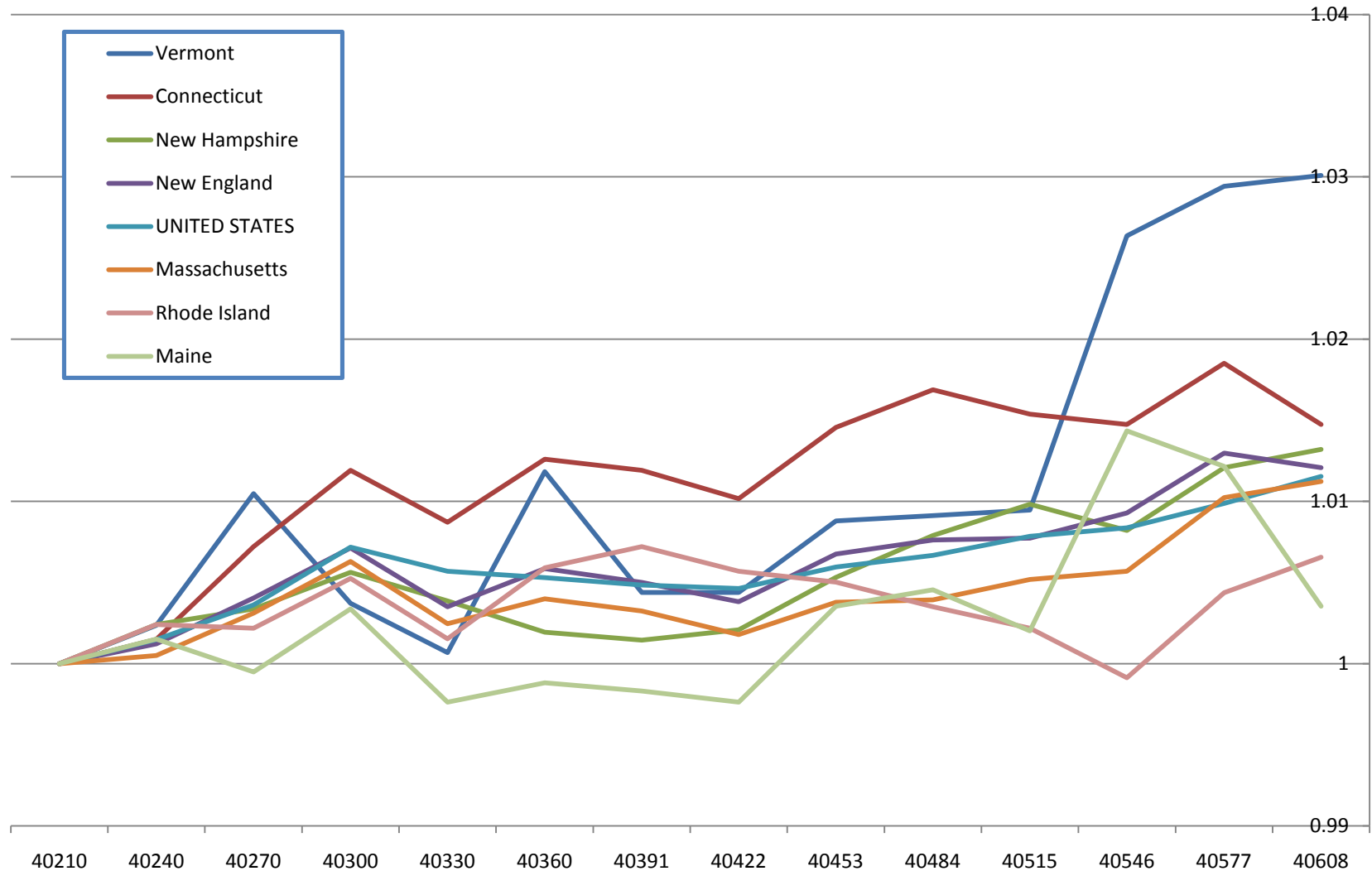


New England Employment Rebounding: February 2010 - March 2011

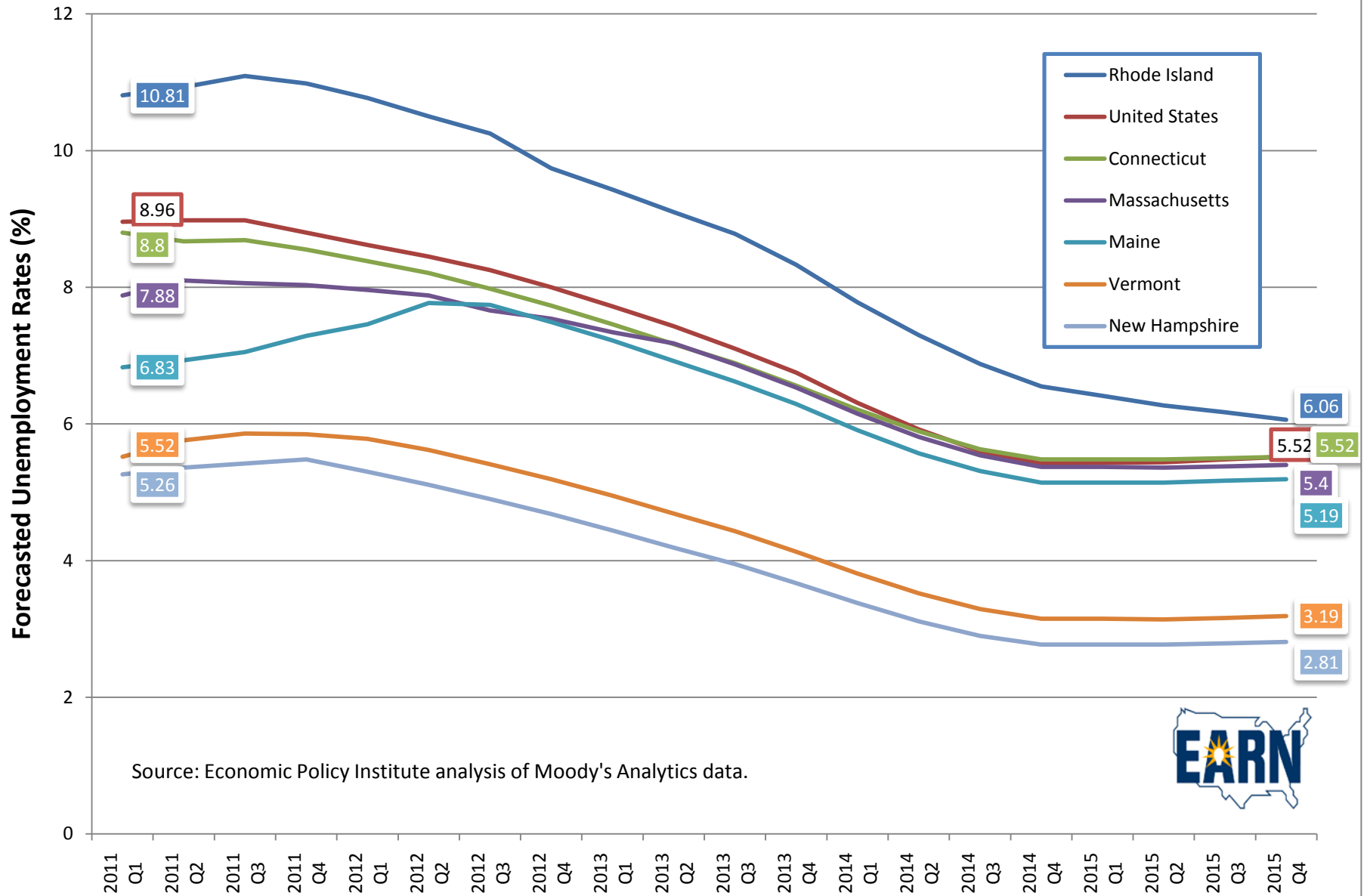
(expressed as percent of February 2010 employment)



Source: Economic Policy Institute Analysis of US Bureau of Economic Analysis data.



New England State Unemployment Rates: Forecast, 2011-2015

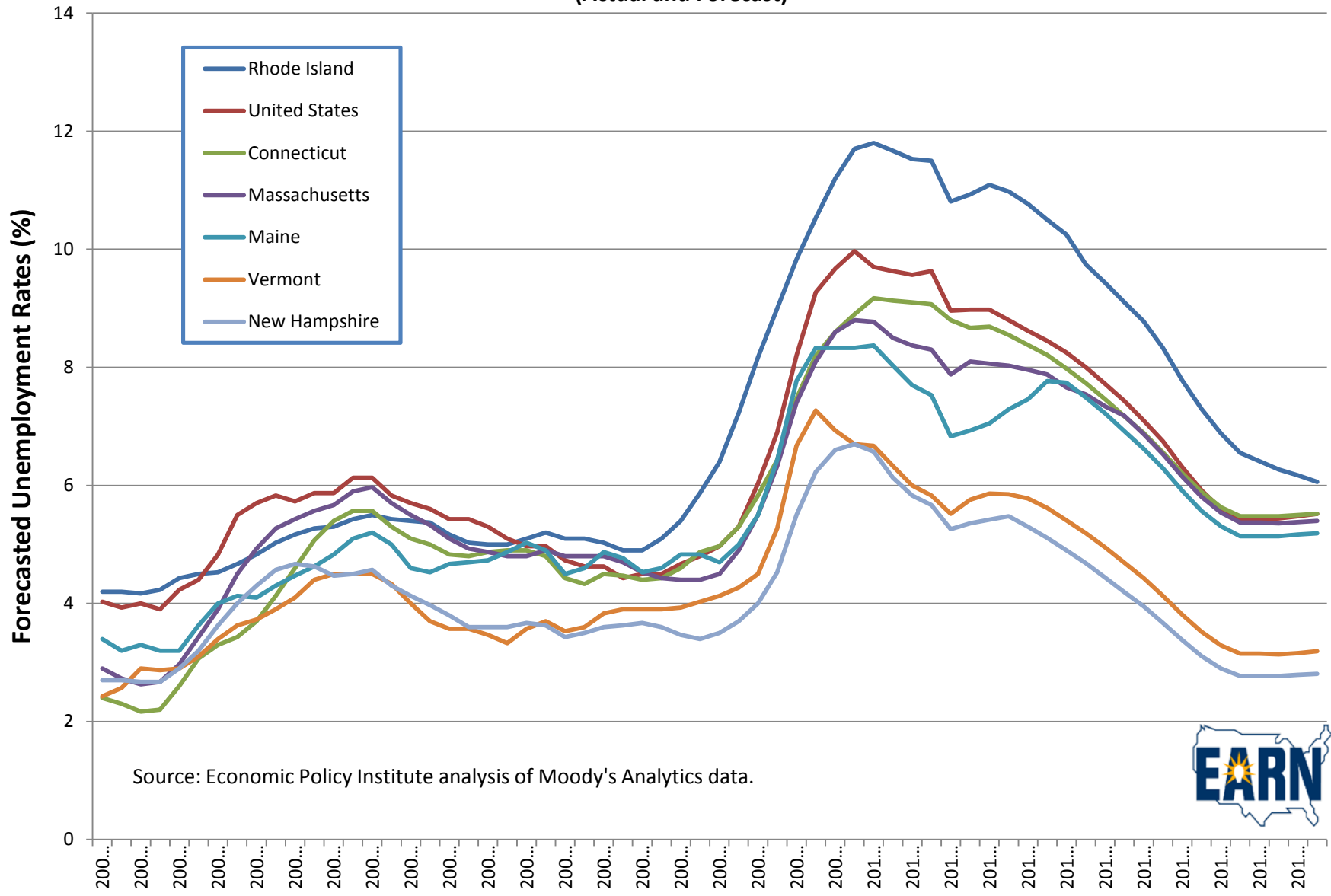


Source: Economic Policy Institute analysis of Moody's Analytics data.



New England State Unemployment Rates: 2000-2015

(Actual and Forecast)



Source: Economic Policy Institute analysis of Moody's Analytics data.

